

WINDOW WALL AND RIBBON WINDOWS

ON
EVERY
LEVEL





Realm Condominiums,
Atlanta, Georgia

 KAWNEER



Kawneer's window wall and ribbon window solutions are designed to allow prefabricated, pre-glazed or site-glazed window and door units to be installed between the floor slabs of mid- to high-rise buildings in a variety of applications, giving the appearance of a curtain wall.

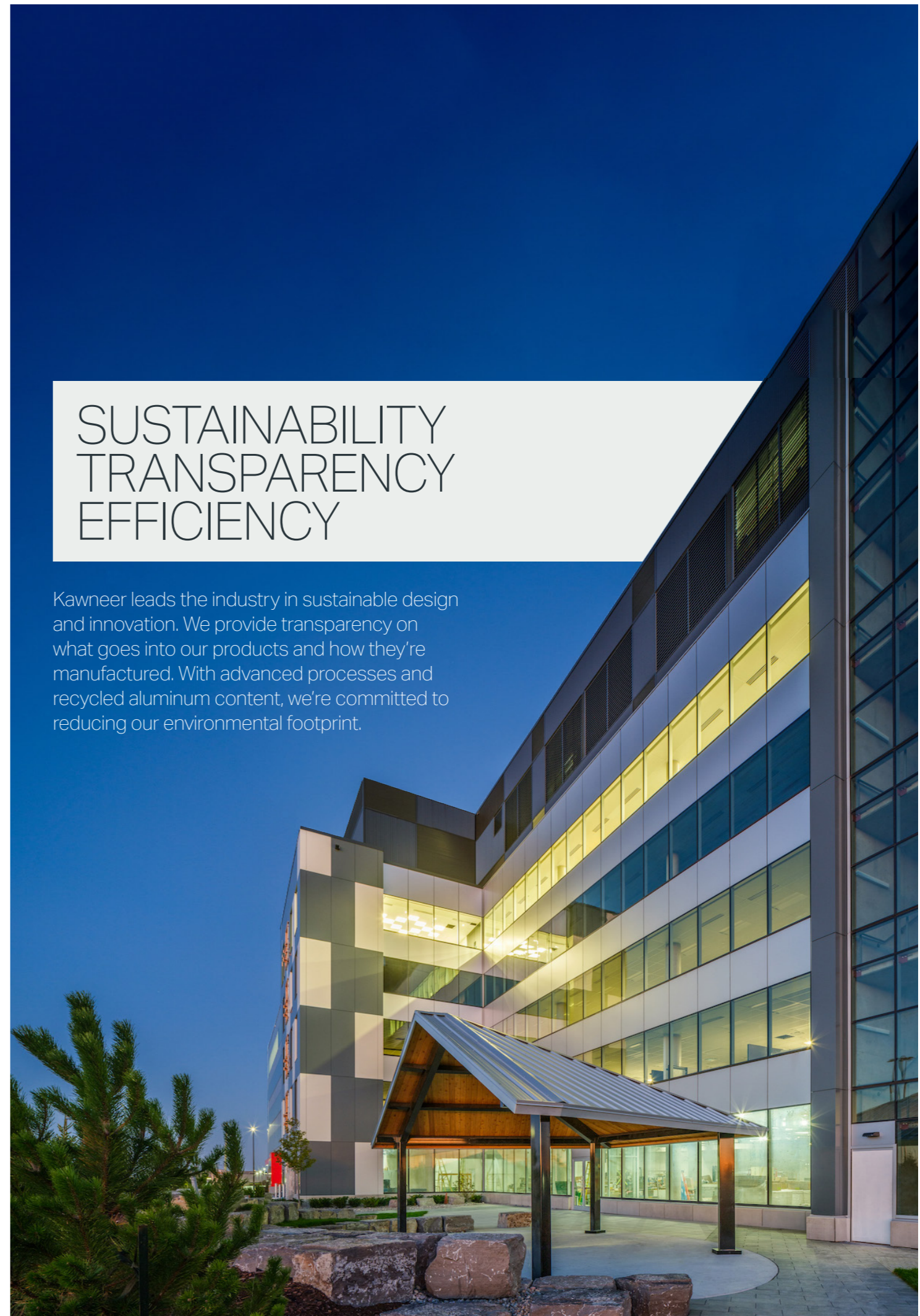
A variety of Kawneer systems can be fabricated in punched openings to create the appearance of window wall. Our ribbon window solutions are installed from the interior, offering more design flexibility and providing occupants with floor-to-ceiling views.

Our wide selection of window wall and ribbon window systems and applications offer a variety of glazing solutions and uninterrupted views on every level. Our systems can accommodate different assembly methods of construction, dry- or wet-glazing and various installation anchoring methods using slab-embeds or strap-anchors or direct fasteners to meet or exceed performance for air leakage, water penetration, structural load, thermal and seismic requirements.

Kawneer's versatile systems and applications offer a variety of aesthetic options, such as captured, structural silicone or structural tape glazing looks, to create a seamless window wall or ribbon window appearance.

SUSTAINABILITY TRANSPARENCY EFFICIENCY

Kawneer leads the industry in sustainable design and innovation. We provide transparency on what goes into our products and how they're manufactured. With advanced processes and recycled aluminum content, we're committed to reducing our environmental footprint.



KENECT NASHVILLE, NASHVILLE, TENNESSEE

Based in the heart of Music City, Kenect Nashville is a 20-story, 600,000-square-foot apartment tower that features 420 modern residences and state-of-the-art amenities for its occupants.

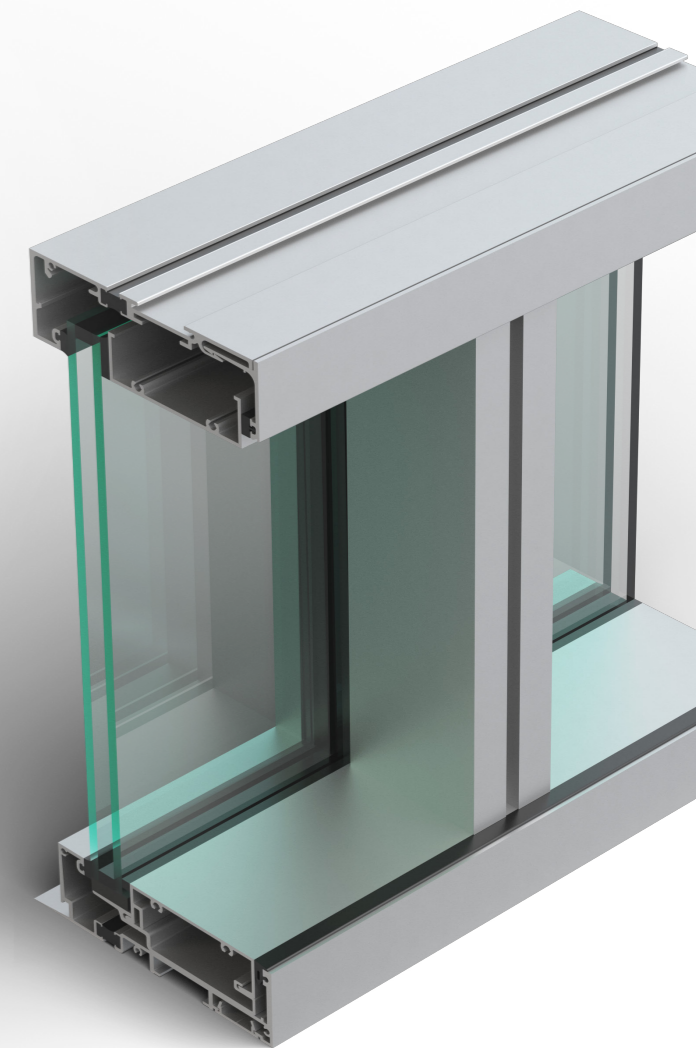
Kawneer's MetroView® FG 601T PG Window Wall system not only gave the project structural strength but also helped achieve the clean lines associated with a curtain wall without compromising performance.

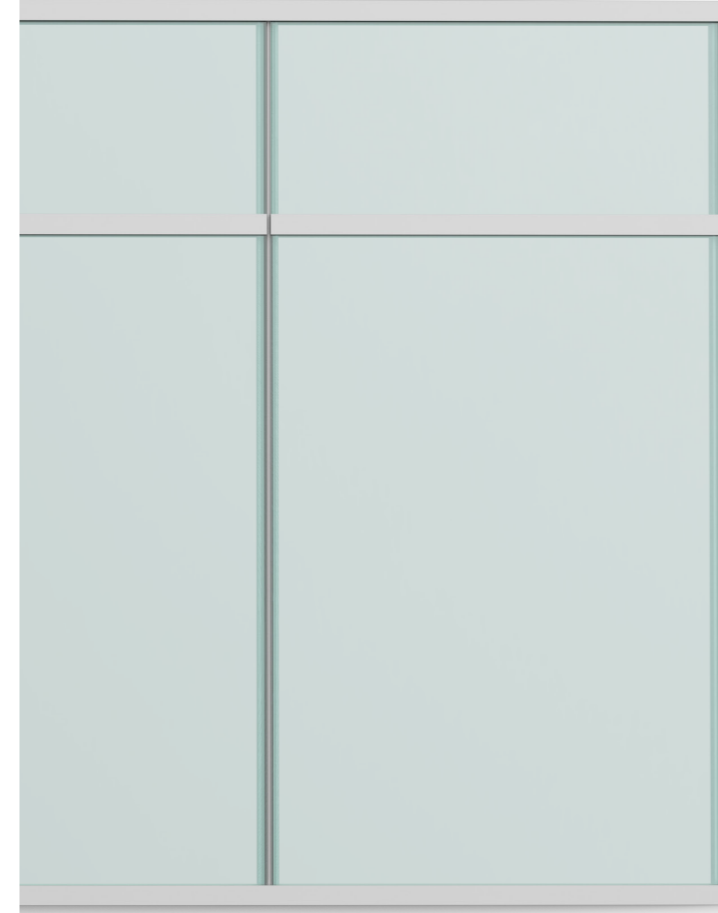
Modifications to Kawneer's standard MetroView® FG 601T PG Window Wall system met structural requirements and allows an abundance of natural light into the building with uninterrupted views. This resulted in a distinctive project that brought the design team's vision of modern living to life.



METROVIEW® FG 601T PG WINDOW WALL

- Thermal, high-performance system
- Narrow 2-1/4" (57.2mm) sight line with standard 6" (152.4mm) system depth
- IsoLock® lanced pour and debridged 3/8" (9.5mm) thermal break
- Screw spline fabrication and joinery
- Captured or 2-sided SSG vertical option
- Silicone compatible glazing materials for long lasting seals





PG 123[®] FRAMING

- Simple, efficient and high-performance system
- Available in stock lengths or factory fabricated
- Pre-glazed option under controlled shop conditions and installed from the interior
- Screw spline joinery, with square cuts and no miters or notching
- Incorporates the IsoWeb[®] glass-reinforced nylon thermal break
- Captured or SSG aesthetic options available

ST. ANTHONY HOSPITAL, GIG HARBOR, WASHINGTON

The city needed a large-scale health center to serve the growing population in the Gig Harbor area. The result was an 80-bed medical facility that unites the maritime history of the region with the natural environment.

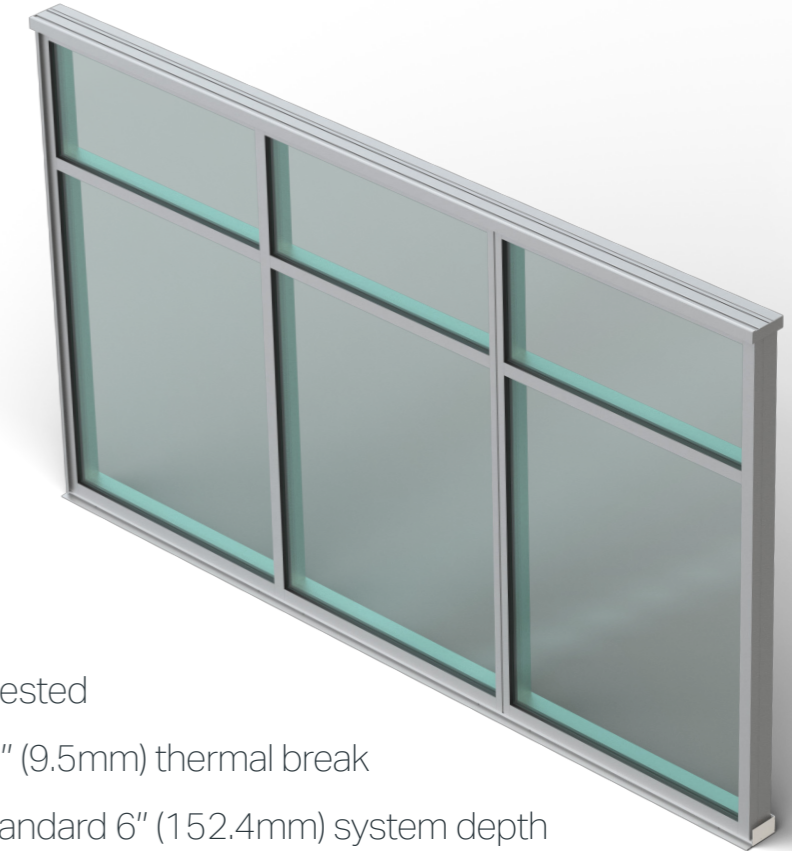
The hospital features Kawneer's PG 123[®] Framing system, providing floor-to-ceiling views and thermal performance for the wide temperature swings of the Pacific Northwest climate.

Due to the high safety requirements of the facility, the strength testing and proven performance of Kawneer's products made the architect and owner feel secure about the integrity of the structure while maintaining the highest quality of design.





METROVIEW® FG 501T WINDOW WALL

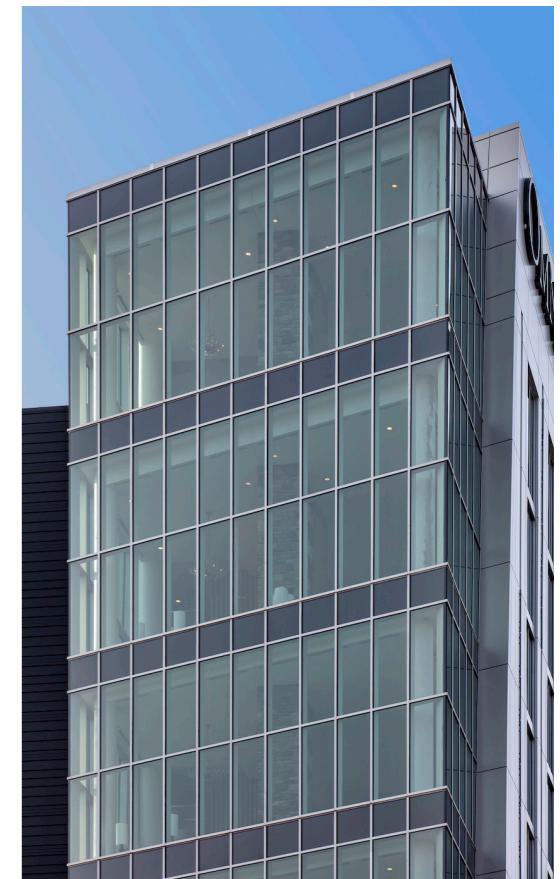


- Screw spline fabrication and joinery
- Seismic AAMA 501.4 and AAMA 501.6 tested
- IsoLock® lanced pour and debridged 3/8" (9.5mm) thermal break
- Narrow 2-1/4" (57.2mm) sight line with standard 6" (152.4mm) system depth
- Standard infill option 1" (25.4mm) wet glazed and 1-3/16" (30.2mm) tape glazed

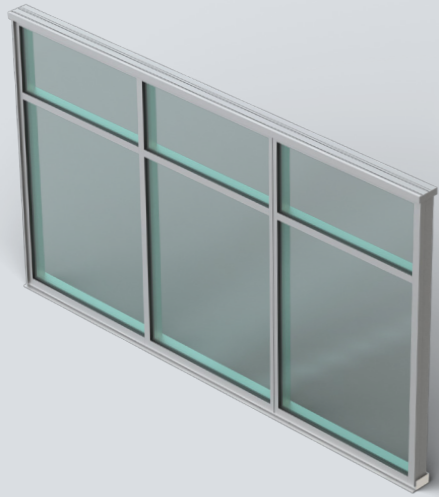
OMNI HOTEL, VIKING LAKES, EAGAN, MINNESOTA

The Omni Hotel is a 14-story, 320,000-square-foot property whose four-star amenities include a spa, fitness center, underground parking, three dining options and a bar terrace with access to the Viking Lakes mixed-use development.

The facade features Kawneer MetroView® FG 501T Window Wall to provide inspiring views and the utmost comfort.



WINDOW WALL SYSTEMS



METROVIEW® FG 501T WINDOW WALL

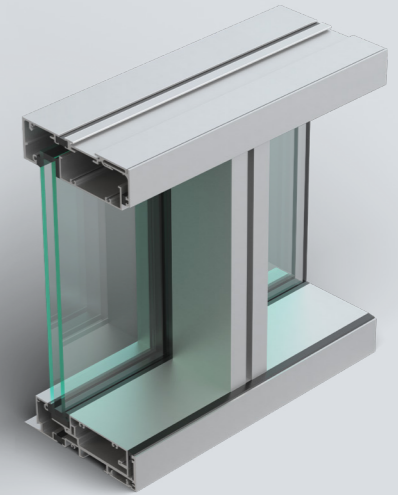
Key benefits:

- Inside-glazed and dry-glazed options
- Fixed ribbon window wall application
- Screw spline fabrication and joinery
- Seismic AAMA 501.4 and AAMA 501.6 tested
- IsoLock® lanced pour and debridged 3/8" (9.5mm) thermal break
- Narrow 2-1/4" (57.2mm) sight line with standard 6" (152.4mm) system depth
- Standard infill option 1" (25.4mm) wet glazed and 1-3/16" (30.2mm) tape glazed

METROVIEW® FG 601T PG WINDOW WALL

Key benefits:

- Wet-glazed, thermal, high-performance system
- Pre-glazed fixed ribbon window wall application
- Narrow 2-1/4" (57.2mm) sight line with standard 6" (152.4mm) system depth
- IsoLock® lanced pour and debridged 3/8" (9.5mm) thermal break
- Screw spline fabrication and joinery
- Captured or 2-sided SSG vertical option
- Silicone compatible glazing materials for long lasting seals



PG 123° FRAMING

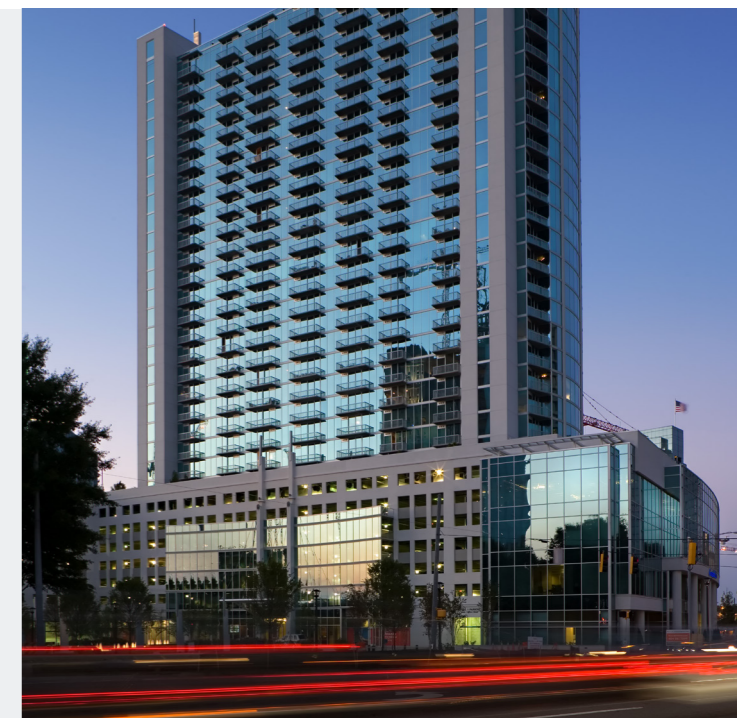
Key benefits:

- Pre-glazed, simple, efficient and high-performance system
- Available in stock lengths or factory fabricated
- Pre-glazed option under controlled shop conditions and installed from the interior
- Screw spline joinery, with square cuts and no miters or notching
- Incorporates the IsoWeb® glass-reinforced nylon thermal break
- Captured or Structural Silicone Glazed (SSG) aesthetic options available
- Fixed ribbon window wall application

FG 623 WINDOW WALL

Key benefits:

- Inside-glazed and dry-glazed options
- Optional IsoLock® lanced pour and debridged thermal break
- Screw spline and shear block fabrication and joinery
- Infill options of 1/4" (6.4mm) and 1" (25.4mm)
- Silicone compatible glazing materials for long lasting seals
- Corner members are available for 90° and 135° applications
- Large missile impact and cycle tested
- Fixed ribbon window wall application



Custom Window Wall

Looking for something more bespoke for your distinctive project? To discuss a custom window wall solution for your project, contact our dedicated Kawneer Collaborative team to discover unlimited possibilities.

Visit: [Kawneer.us/collaborative/](https://www.kawneer.us/collaborative/)

RIBBON WINDOW SYSTEMS

Curtain Wall



1600 WALL SYSTEM^{®5} CURTAIN WALL

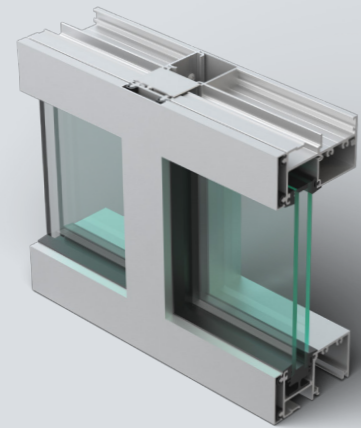
Key benefits:

- Inside-glazed
- Punched opening option (Type "B" fabrication)
- 2-1/2" (63.5mm) sightline
- 6" (152.4mm) or 7-1/2" (190.5mm) depth
- Low- to high-rise application
- High thermal performance and seismic tested (AAMA 501.4 standards)
- Vertical Structural Silicone Glazed (SSG) options available

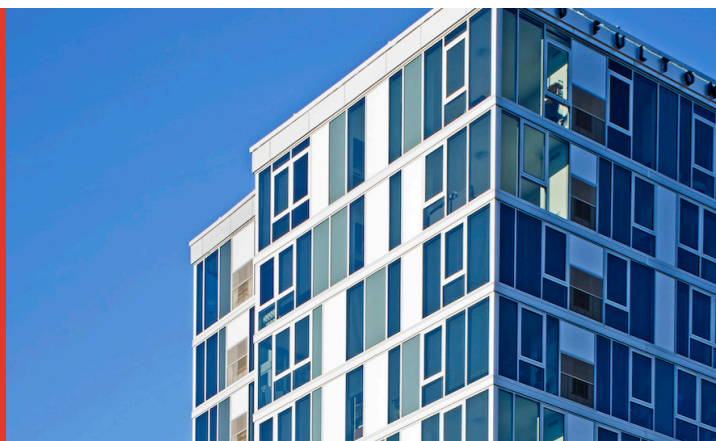
2250 IG (INSIDE GLAZED) CURTAIN WALL

Key benefits:

- Punched opening option (Type "B" fabrication)
- Narrow 2-1/4" (57.2mm) sightline
- 4-1/2" (114.3mm), 6" (152.4mm) or 7-1/2" (190.5mm) system depths
- Thermal performance
- Structural Silicone Glazed (SSG) options available
- Inside glazed option



Windows



8225TL THERMAL WINDOWS

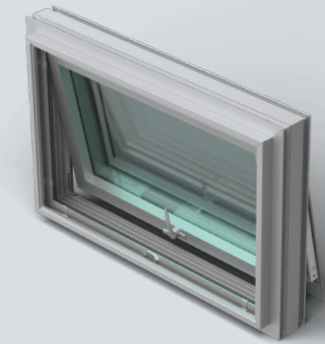
Key benefits:

- Pre-glazed
- 2-1/4" (57.2mm) depth
- Architectural window (AW)
- Thermal performance
- Fixed, casement or projecting configuration
- Hurricane resistance

OPTIQ[®] AA[®]4325 SERIES WINDOWS

Key benefits:

- Pre-glazed
- 3-1/4" (82.6mm) depth
- Architectural window (AW)
- Ultra-thermal performance
- Fixed, projecting, casement or tilt-turn
- Blast mitigation, hurricane resistance



AA[®]6400/6500/6600 THERMAL WINDOWS

Key benefits:

- Inside-glazed
- 4" (101.6mm), 5" (127mm) or 6" (152.4 mm) depth
- Architectural window (AW)
- High thermal performance
- Casement or projecting window options



OPTIQ[®] AA[®]5450 SERIES WINDOWS

Key benefits:

- Pre-glazed
- 4-5/8" (117.5mm) depth
- Architectural window (AW)
- Ultra-thermal performance
- Fixed, hung and sliding configuration
- Beveled face option for single/double hung windows



8400TL THERMAL WINDOWS

Key benefits:

- Pre-glazed
- 4" (101.6mm) frame depth
- Architectural window (AW)
- High thermal performance
- Fixed, single or double hung, horizontal sliding
- Blast mitigation on 8430TL single hung and 8470TL horizontal sliding
- Hurricane resistance on 8430TL single hung, 8470TL horizontal sliding and 8400TL fixed





ENDLESS OPPORTUNITIES

Kawneer's selection of versatile systems and applications offers a variety of aesthetic options to create a seamless window wall or ribbon window appearance for multifamily projects and more.

To discover how our architectural aluminum products can transform your next project, get in touch with your Kawneer sales representative today.

Visit [Kawneer.com](https://www.kawneer.com) to find out more.